

Pronouns

they

that

her

yours

when

theirs

it

who

those

them

ours

which

mine

his

we

What are pronouns?

Pronouns are words which can replace nouns.

There are many different types of pronouns:

Personal pronouns

Possessive pronouns

Relative pronouns



Personal pronouns

2

Personal pronouns are words which can be used instead of
a person, place or thing.

They are used to avoid repeating a word which has already been used.

If the noun that is mentioned is plural, the pronoun which is being used to replace it is also plural.

e.g. the children = they



Personal pronouns

Here are a list of the 12 personal pronouns that can be used instead of people:

I

you

he

she

it

we

they

me

him

her

us

them

Here are the 3 personal pronouns which can be used for things:

they

them

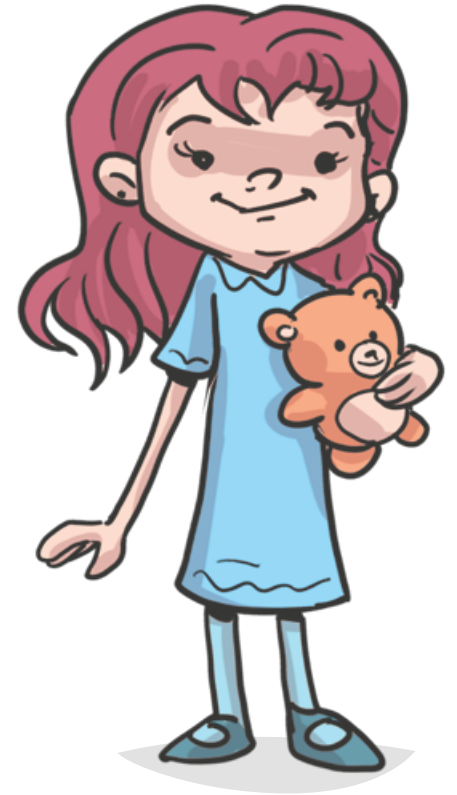
it

Personal pronouns

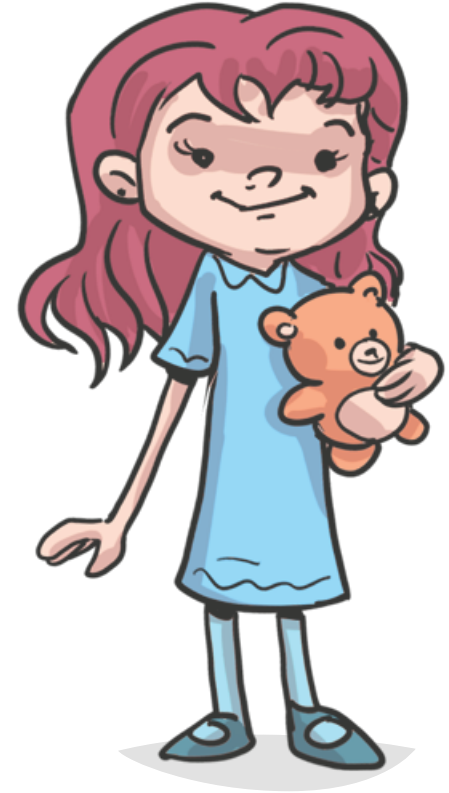
Can you identify the personal pronouns in these sentences?

a) Clemmie has two younger brothers.
She looks after them when school finishes.

b) Eddie loves golf. He plays it every Sunday.



a) Clemmie has two younger brothers.
She looks after them when school finishes.



b) Eddie loves golf. He plays it every Sunday.



Possessive pronouns

6

Possessive pronouns are words which show ownership.

They are used in the place of a noun.

They are used after the noun and cannot be used before the noun.

e.g. That jumper is mine.

They should not be mistaken with possessive adjectives.

Possessive adjectives are always followed by a noun

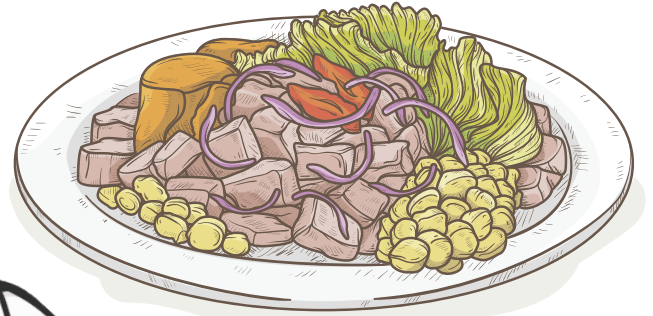
e.g. This is your jumper.



Possessive pronouns

Complete the sentences with an appropriate possessive pronoun.

a) That isn't your plate. It's _____.



b) I've just found this football. Is it _____?



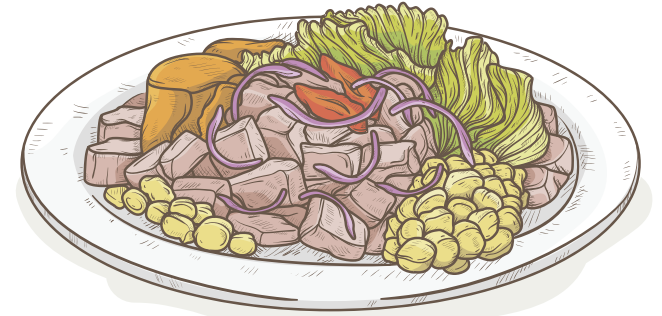
c) Ed and I just bought a new house. It is _____.



Possessive pronouns

Complete the sentences with an appropriate possessive pronoun.

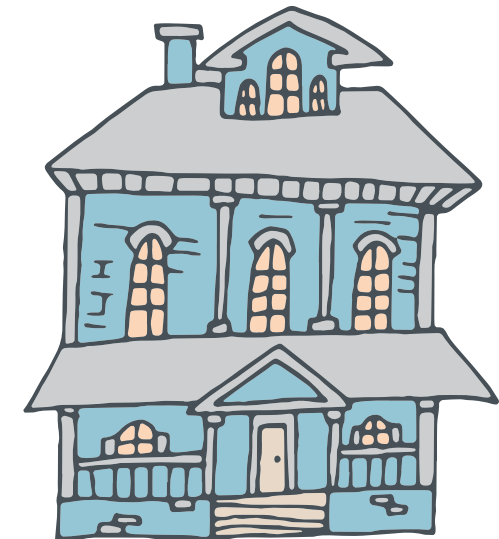
a) That isn't your plate. It's mine.



b) I've just found this football. Is it yours?



c) Ed and I just bought a new house. It is ours.



Relative pronouns are words which introduce a relative clause.

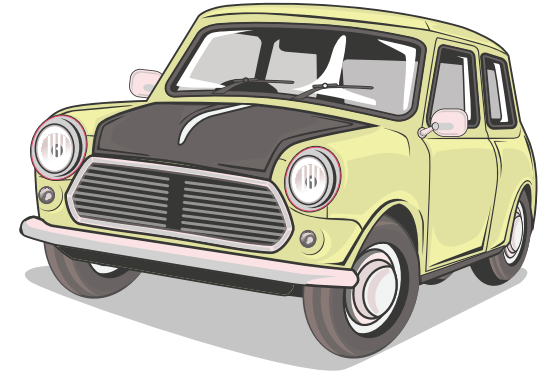
They join the relative clause to the main clause.

e.g. who, those, which, when, that

The type of relative pronoun used depends on what kind of noun is being described.

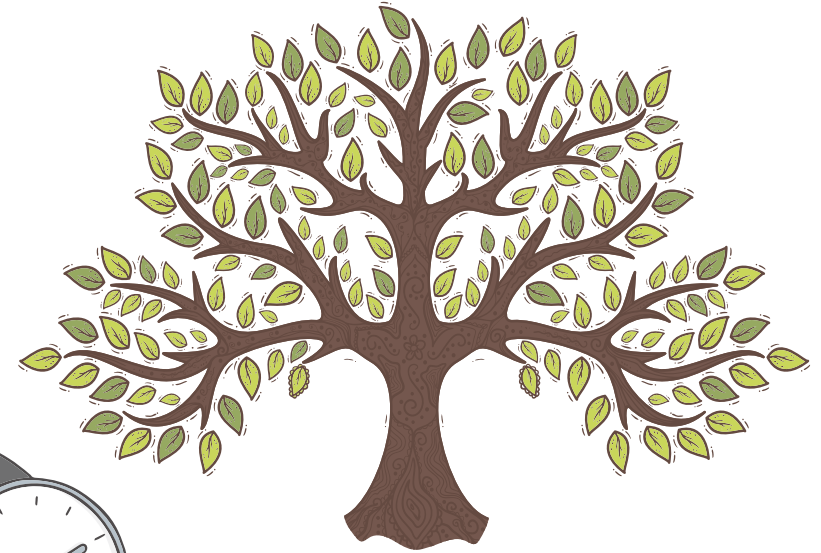
Relative pronouns

Can you identify the relative pronouns in these sentences?

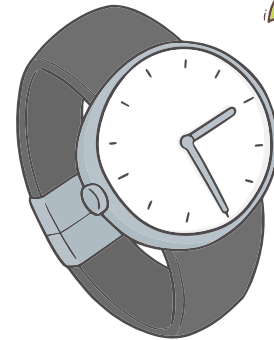


a) The man who was driving the car looked very angry.

b) The tree, which grows at the bottom of our garden, produces a beautiful blossom every year.

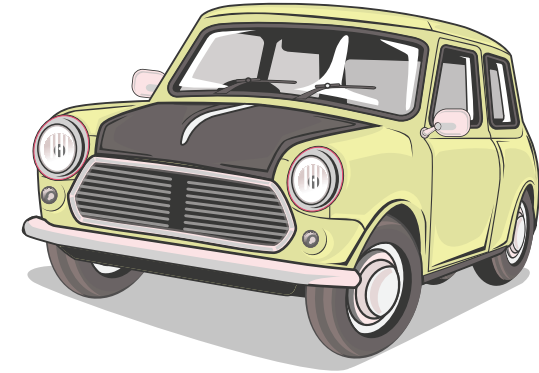


c) Jack, whose watch was broken, was running late.



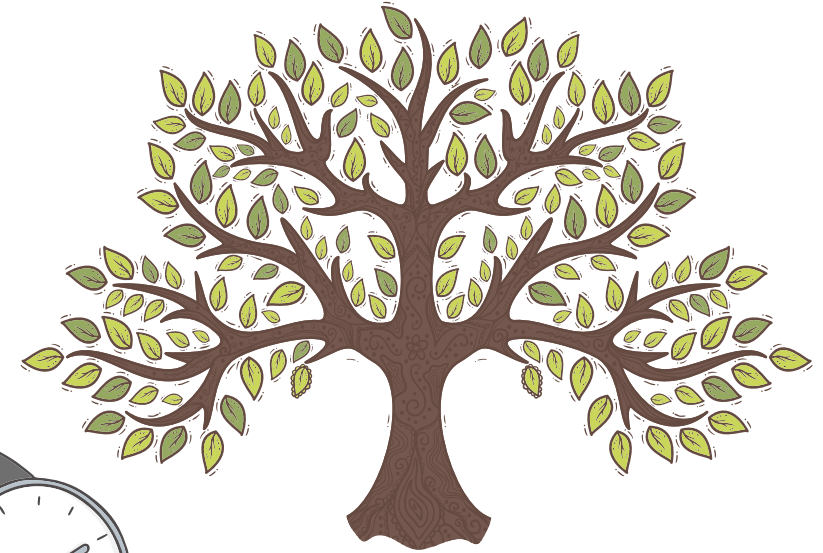
Relative pronouns

Can you identify the relative pronouns in these sentences?



a) The man who was driving the car looked very angry.

b) The tree, which grows at the bottom of our garden, produces a beautiful blossom every year.



c) Jack, whose watch was broken, was running late.



Write sentences about these pictures using personal pronouns, possessive pronouns and relative pronouns.

