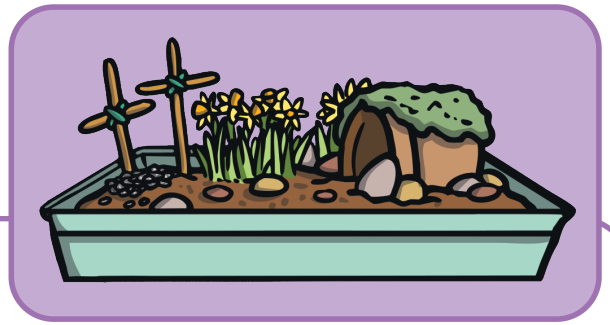


# Easter Garden

## You will need:

- Plastic plant tray
- Soil
- Moss
- Small stones, pebbles or gravel
- 1 large stone
- Small flowerpot
- Some small flowering plants, such as mini daffodils
- 6 sticks
- Gardening trowel
- String or twine



## Instructions

1. Put your flowerpot on its side in the tray. This is going to symbolise Jesus' tomb.
2. Fill the tray with soil. Make sure the soil also covers the sides and top of the flowerpot (so it looks like a hill).
3. Add your small pebbles or gravel wherever you would like.
4. Dig some small holes in the soil and plant your flowers. Make sure they have enough space for their roots to grow!
5. Use the moss to cover some of the soil (the 'ground') and the hill. This will look like grass.
6. Overlap two of your sticks to form a cross. Use your string or twine to tie them together. Repeat this to make three crosses in total.
7. Push your crosses into the soil so they stand upright.
8. Place the big stone in front of the open end of the flowerpot.
9. Put your Easter garden on display, somewhere where the plants can get plenty of sunlight.

