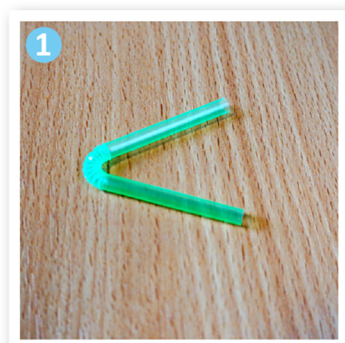


How to make a bottle submarine

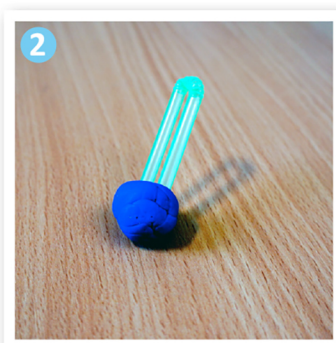
Equipment

- full bottle of water
- cup of water
- piece of modelling clay
- scissors
- bendy straw

Method



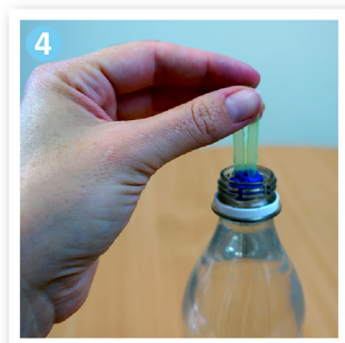
Use the scissors to cut the straw to create a V-shape.



Push both ends of the straw into the piece of modelling clay.



Put the model into a cup of water. Adjust the amount of clay until it just floats.



Put the model into the full bottle of water.



Make sure it floats. Adjust the amount of clay if necessary.



Screw the lid onto the bottle and tighten. Firmly squeeze the sides of the bottle, hold, and then release. The 'submarine' should sink with each squeeze and surface with each release.