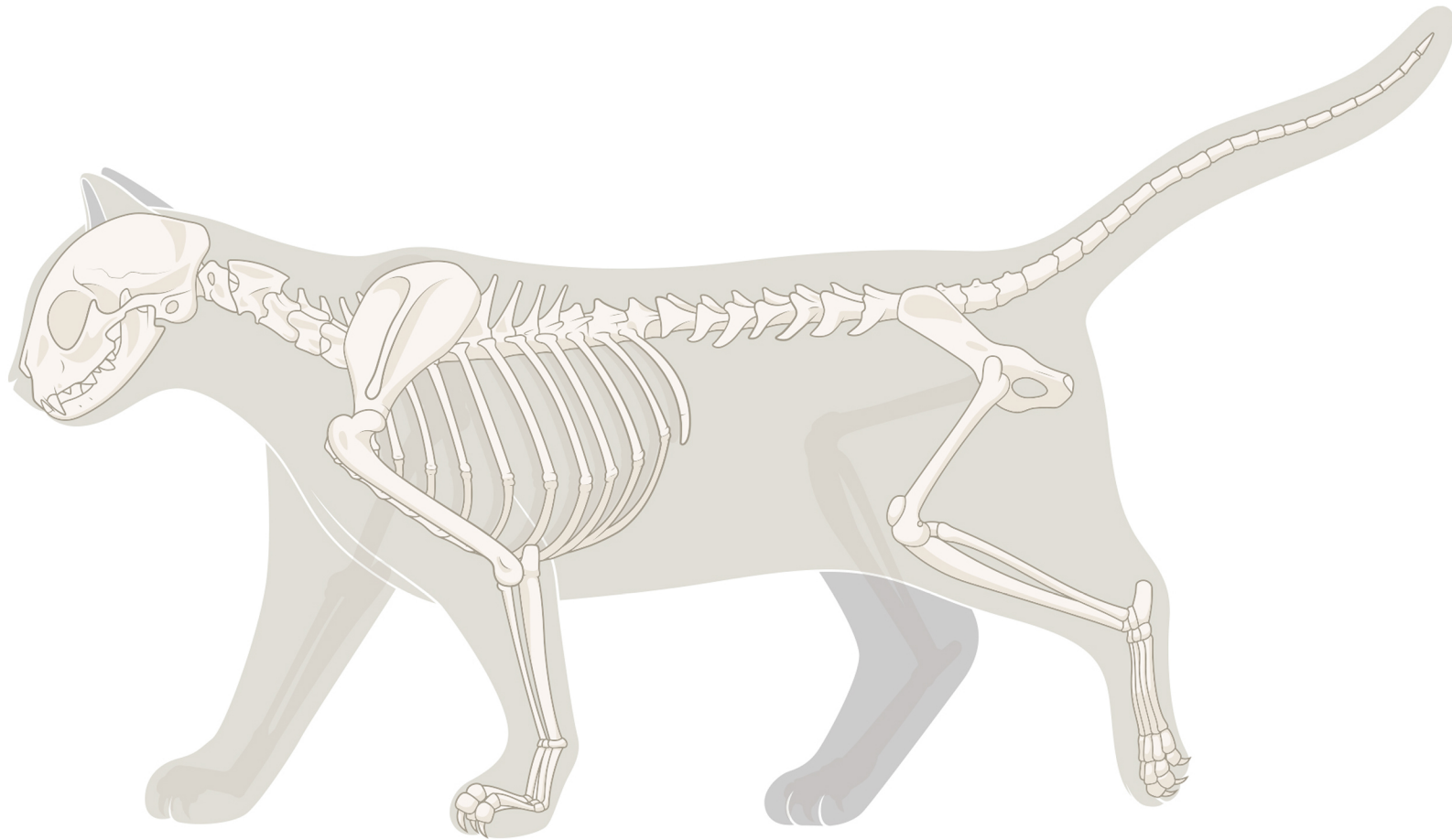




Cornerstones

# Skeletons



**A skeleton is the frame of bones that supports and protects the body and organs of an animal.**



**Some animals, such as humans,  
have endoskeletons, which are  
found inside the body.**



**Some animals, such as snails,  
have exoskeletons, which  
are found outside the body.**







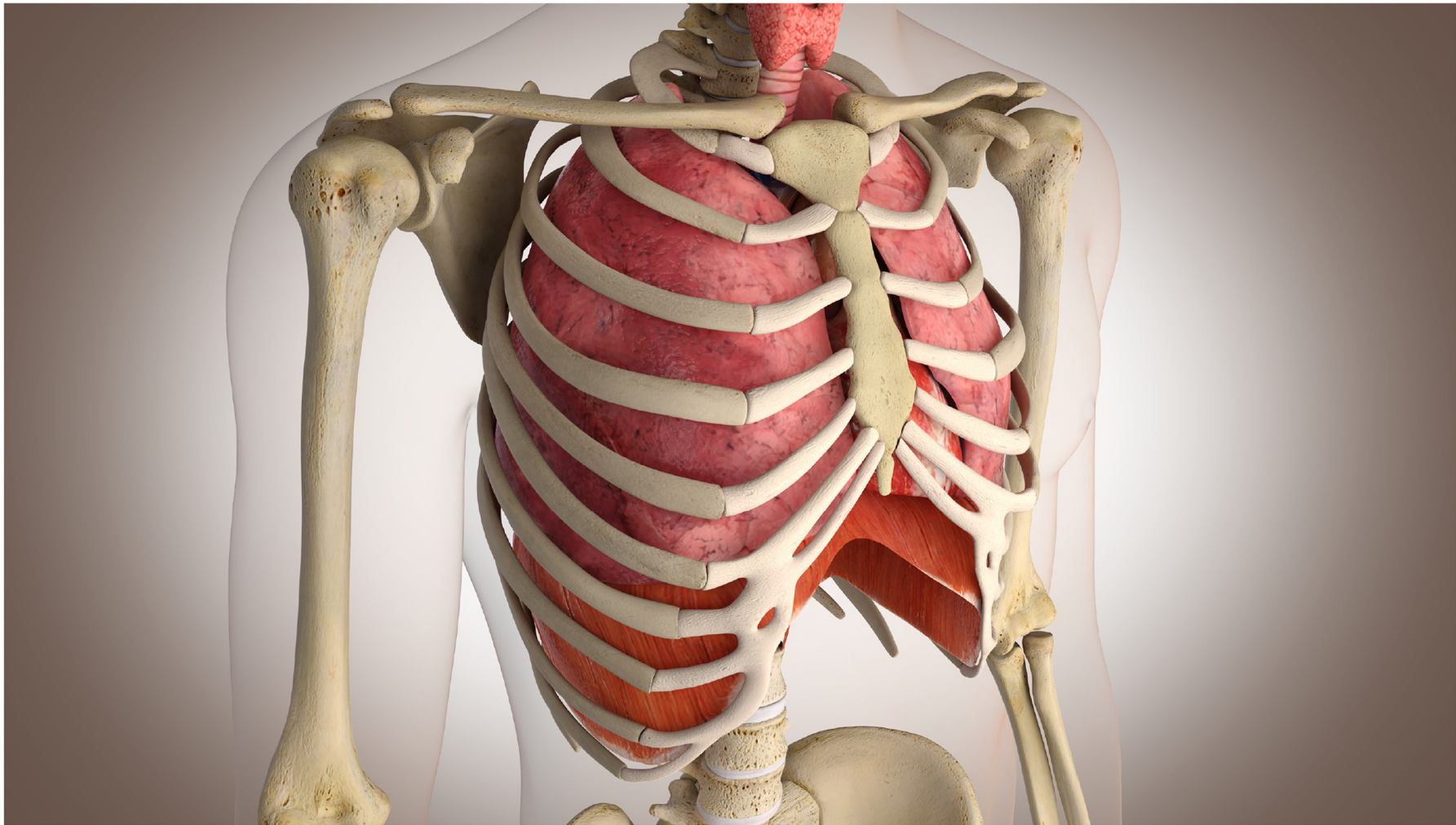
**Some animals, such as turtles, have both endo and exoskeletons.**





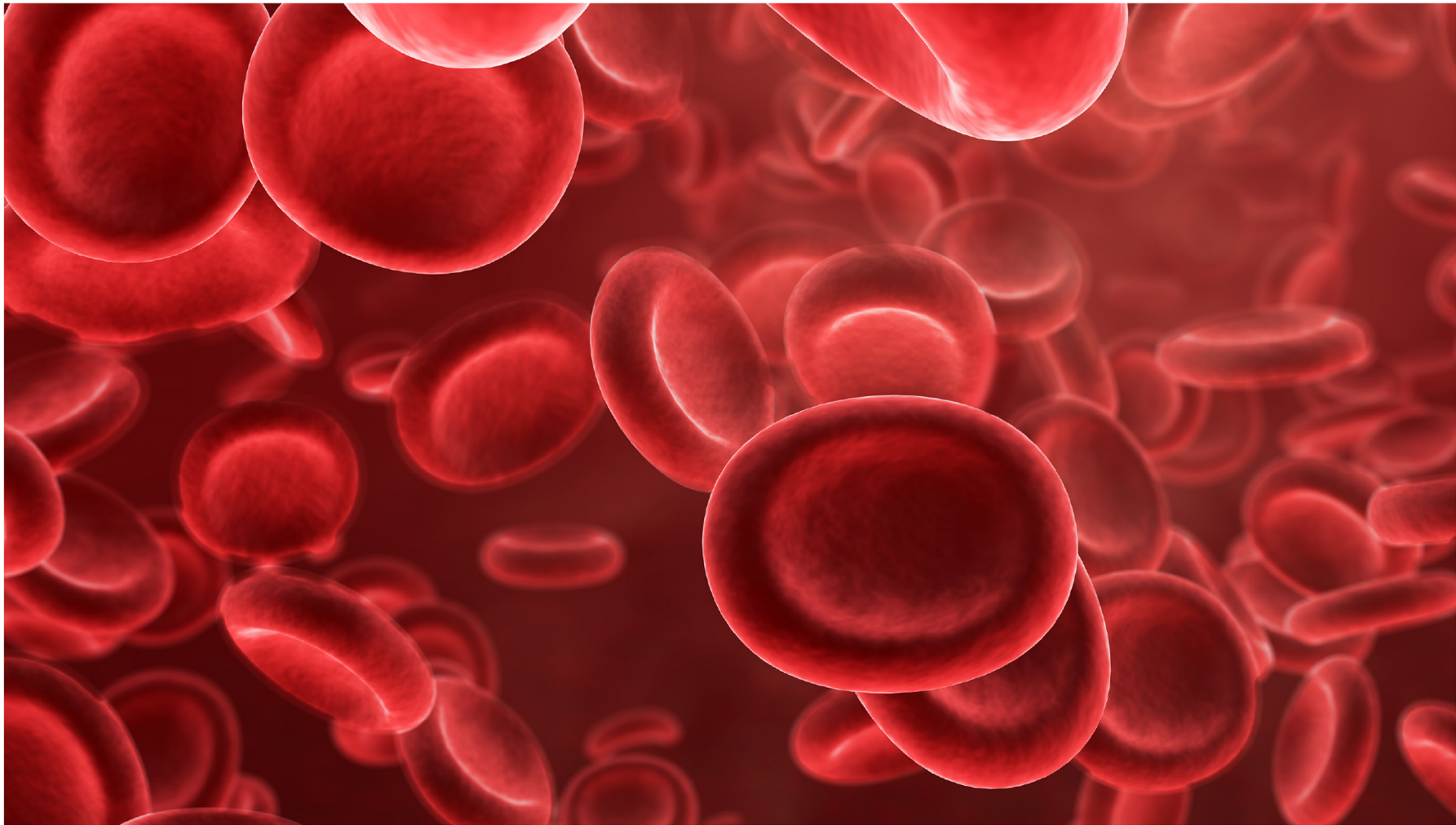
**Some animals have no skeleton at all!**





**The skeleton provides structure, protects organs and supports muscles that help the body move.**





**Blood cells are also made inside some bones.**