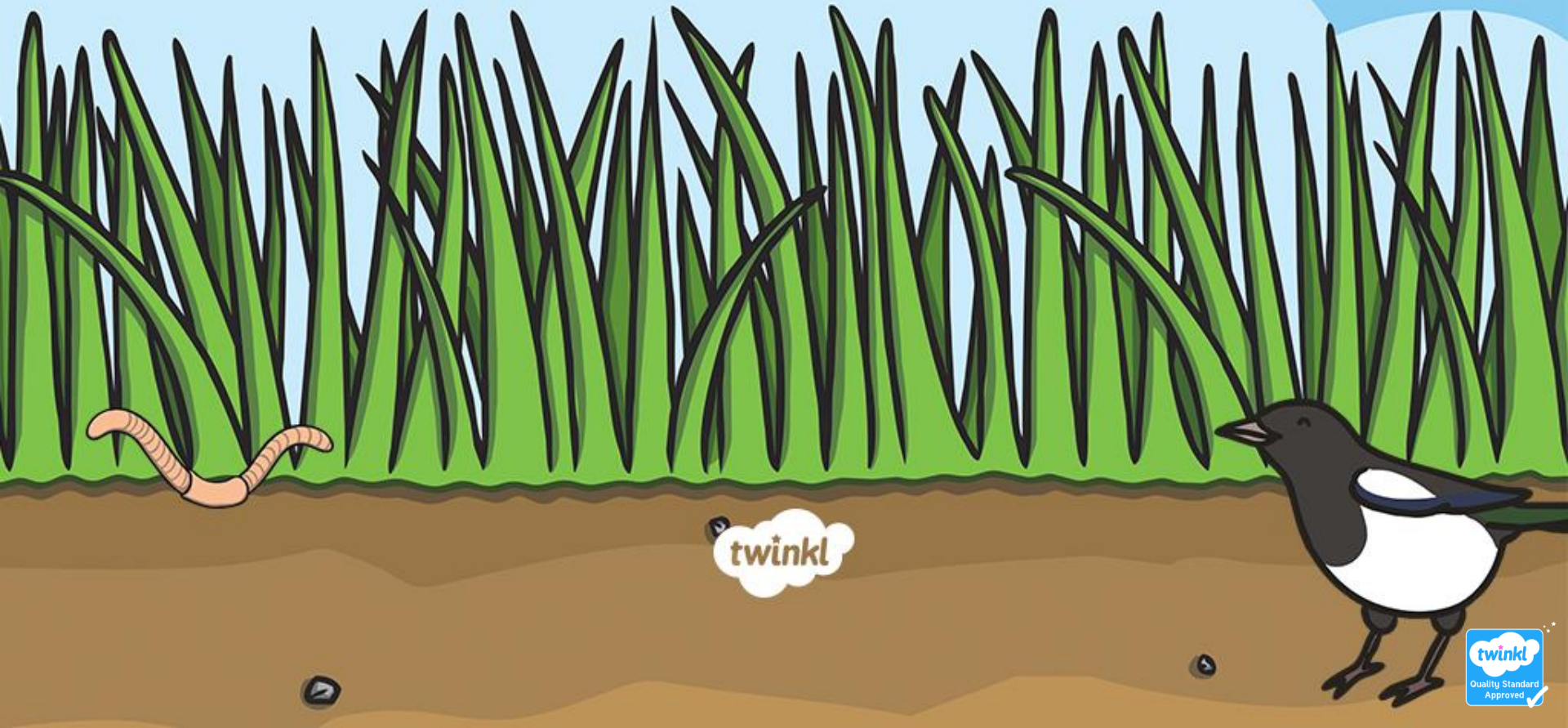


# What Is a Food Chain?



# What Is a Food Chain?

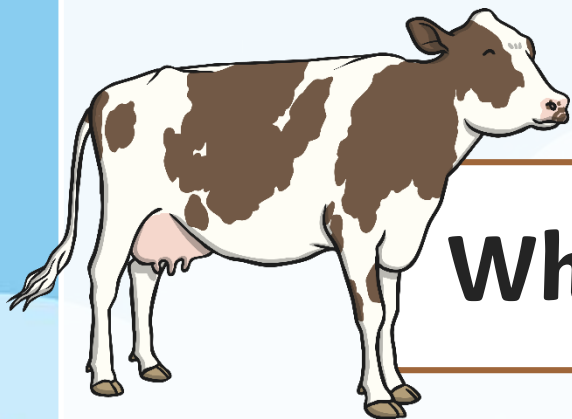
A food chain shows how animals depend on other plants and animals for their food and survival.



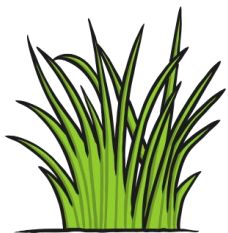
# What Is a Food Chain?

A food chain can tell you about what animals eat.





**What does a cow eat?**



**grass**

**correct**



**cereal**

**wrong**

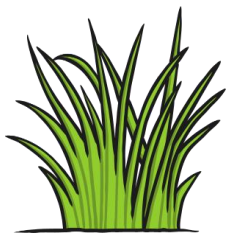


**mice**

**wrong**

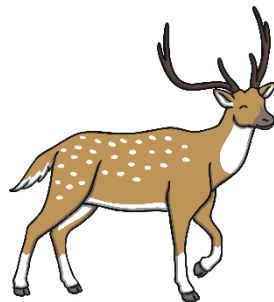


What does a tiger eat?



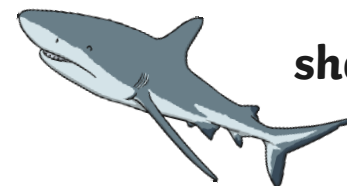
grass

wrong



deer

correct



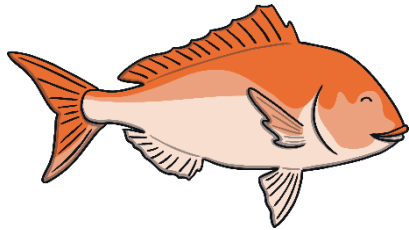
shark

wrong



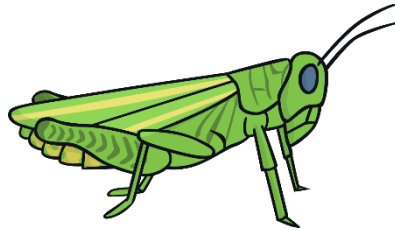


**What does a lion eat?**



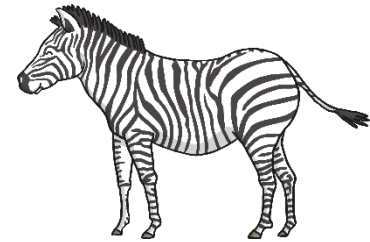
**fish**

**wrong**



**grasshopper**

**wrong**

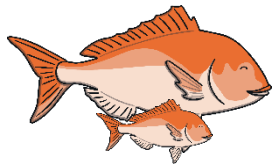
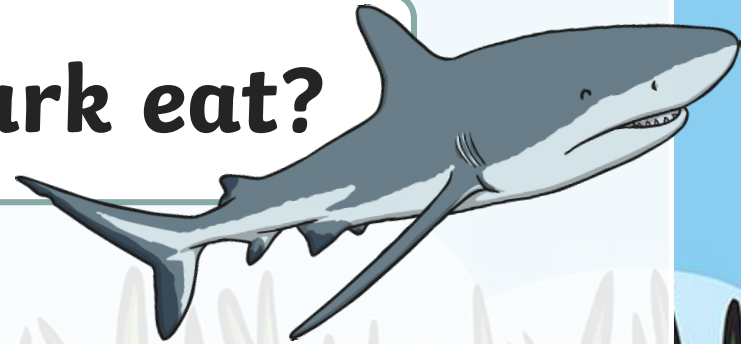


**zebra**

**correct**

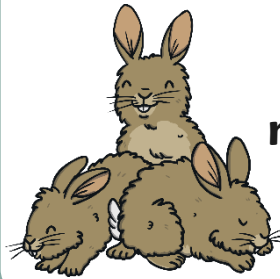


# What does a shark eat?



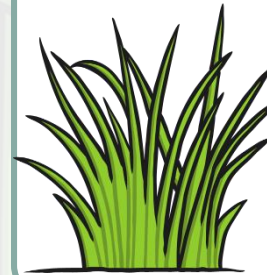
fish

correct



rabbits

wrong



grass

wrong



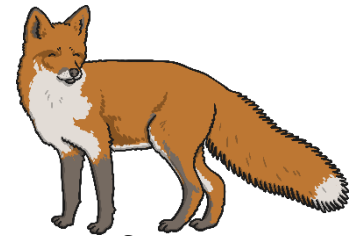
**This is a food chain.**



seeds



shrew



fox





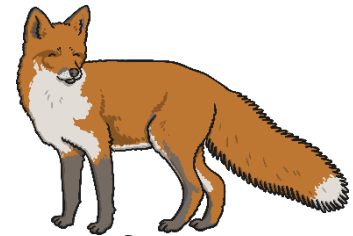
**The arrows show the direction  
the energy is transferred.**



seeds



shrew



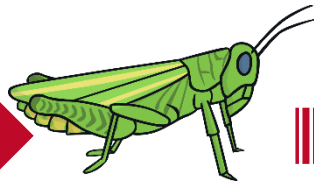
fox



Which animal is missing from this food chain?



grass



grasshopper



shrew



owl



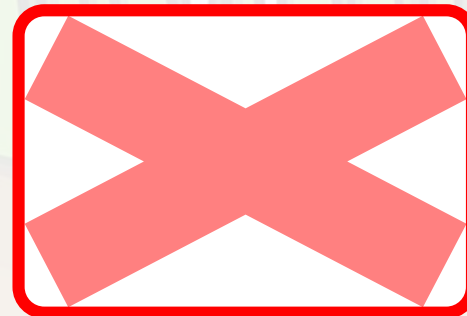
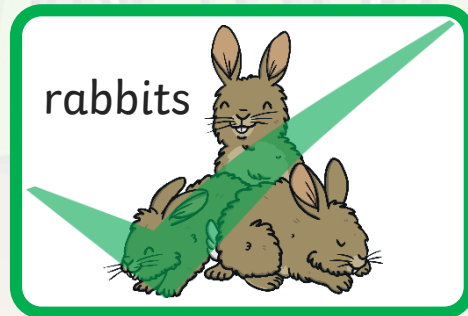
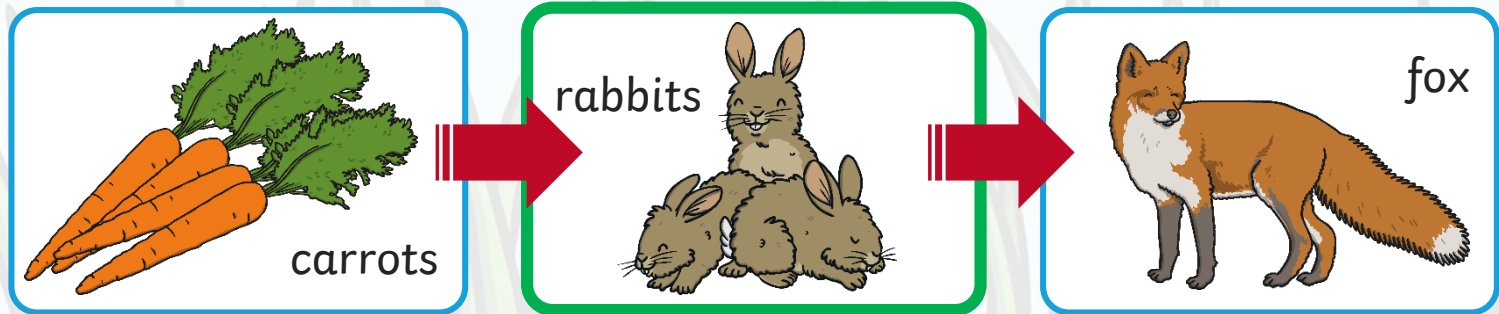
owl



frog

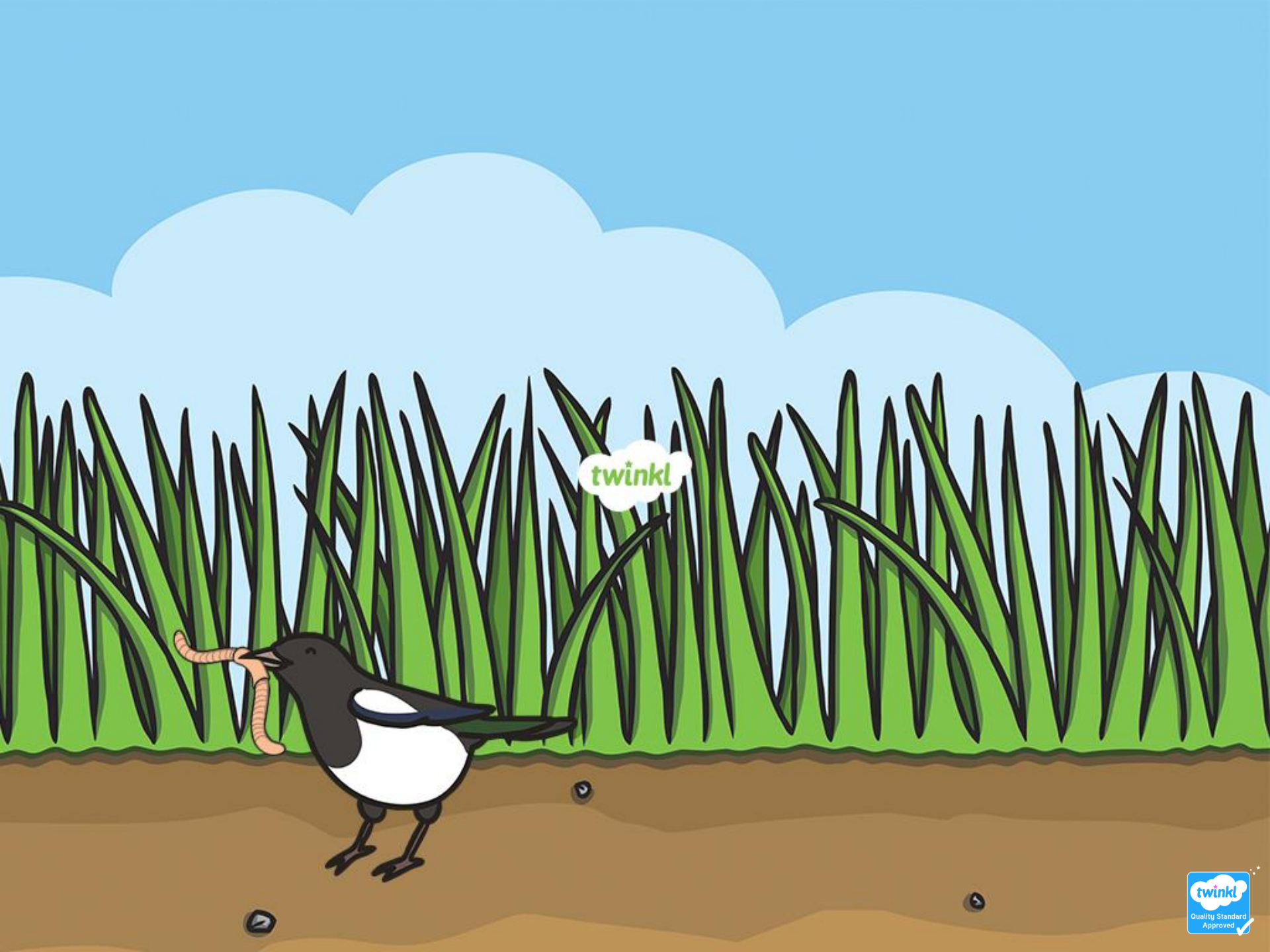


Which animal is missing from this food chain?



**What did you find out about  
food chains?**





twinkl