

# How to make blood!

## You will need

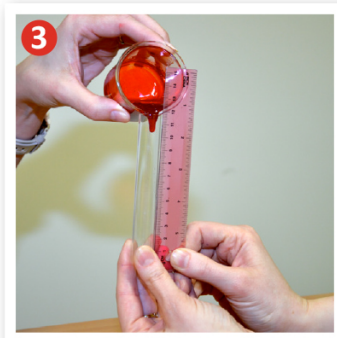
- Beaker
- Syrup
- Test tube
- Vegetable oil
- Test tube holder
- Red food colouring
- Milk
- Pipette



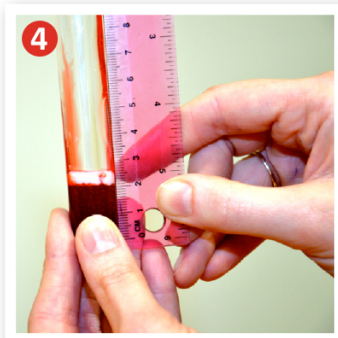
Pour 50 ml of syrup and a few drops of red food colouring into the beaker.



Stir the syrup and food colouring, until they are thoroughly mixed together.



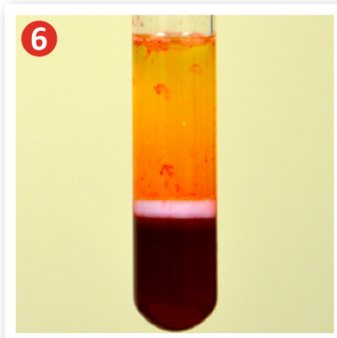
Hold the test tube and pour in the red syrup to a depth of 2 cm.



Use the pipette to add a small amount of milk to a depth of 0.5 cm.



Pour the oil on top to a depth of 4 cm. Cover the top of the test tube shake the mixture well.



Allow the mixture to stand for approximately one hour.

---

### What can you see? Look out for:

- a yellowy layer on the top representing plasma
- a thin, cloudy layer in the middle representing the white blood cells and platelets
- a red layer at the bottom representing the red blood cells.

### What next?

Find out about the function of each component: plasma, white blood cells, platelets and red blood cells.